

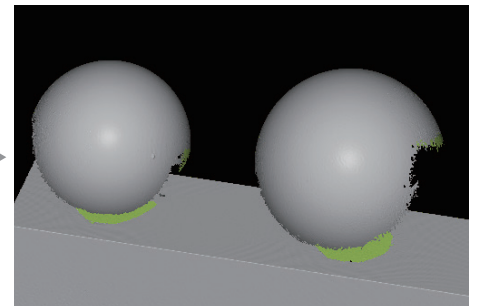
Scanning Spray for Optical 3D Measurement

# Jet Swan



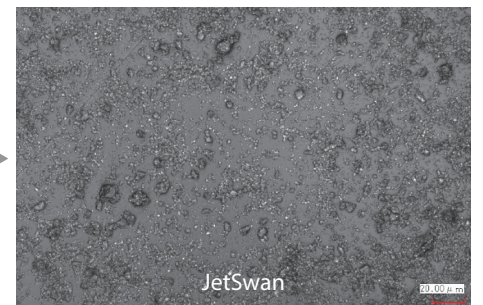
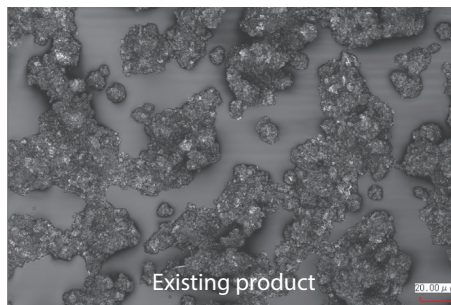
## Anti-Glare: from Shiny to Black

By forming a white surface on a glossy or black surface, which is difficult for optical non-contact measurement, and obtaining a suitable amount of reflected light for measurement, it is possible to easily measure 3D shapes.



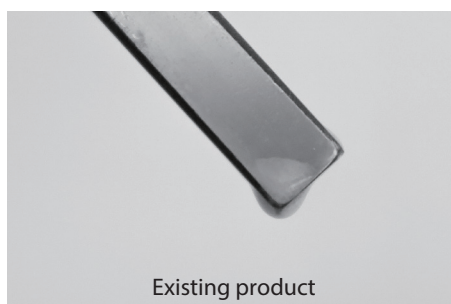
## Thin Coating: stable and reliable

JetSwan uses a specially selected spray material. The effect of the unevenness of the applied powder is minimal, and the shape of the measurement object can be accurately measured.



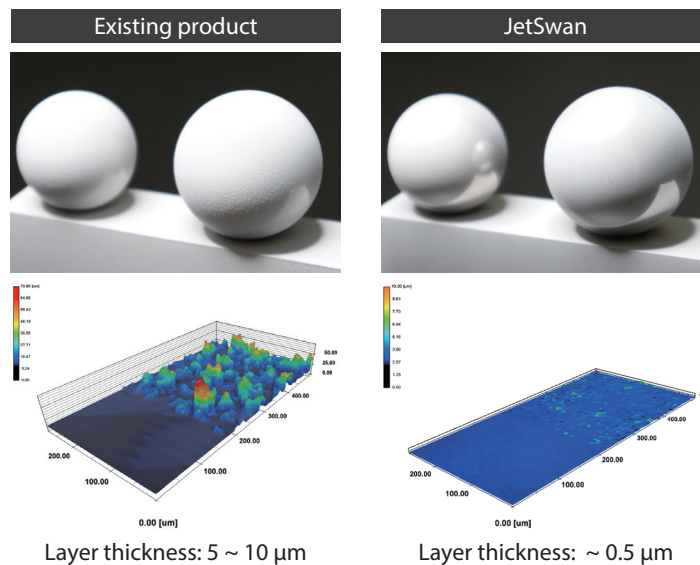
## Quick Dry: Fast and Easy

Quick-drying properties prevent uneven coating due to dripping.



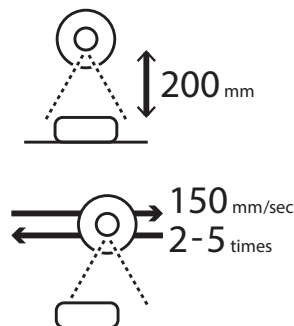
## Comparison of layer thickness

- JetSwan forms an ultra-thin layer on the object surface, which has the least influence on the measurement.
- Test result of layer thickness :
  - <existing product> 5 ~ 10  $\mu\text{m}$
  - <JetSwan> ~ 0.5  $\mu\text{m}$
- Layer thickness measurement :
- Spray twice from 200mm on optical flat covered by masking tape and move the spray at a speed 150mm/s. Tear off the tape, then measure the edge between coating and uncoating section by microscope. The value of edge will be layer thickness.



## How to use: Easy Steps

1. Shake the spray for 30 seconds with a clang sound from inside.
2. Spray Jet Swan from 200 mm away from the object.
3. Spray on the surface of project and move the can at a consistent pace at a speed 150 mm/sec to achieve an even coating.
4. If coating is not enough, wait for the prior spray to dry and then spray again.
5. It is better to spray twice for glossy surface of metal machining, five times for surface of black resin.
6. When removing the applied powder, wash with water if it can be washed with water. Remove possible cleaning materials using a brush or the like.



## Product Information

Ingredients: isopropanol, calcium carbonate, butane

Content @ Can: 420 ml / 14.2 oz

Manufacture: FUJIOKA CO., Ltd.

Contact: jetswan@fujiooka-coltd.co.jp

## Usage notes

- Use in a well-ventilated place.
- Wear protective gloves / glasses / mask / clothes.
- Do not inhale gas / mist / steam / spray.
- Do not spray onto a naked flame or any incandescent material.
- Wash hands after using.
- Please check our Safety Data Sheet for further information and before usage.

## Warning

- Do not use near an open flame.
- Avoid prolonged exposure to sunlight or heat sources over 40 / 104 that may cause bursting.
- Do not dispose it in fire.
- Please use it up before disposal.
- Do not eat or smoke when using.